

CNC Lathe 1236/1340™

MicroKinetics
C O R P O R A T I O N



CNC Turning Systems
From MicroKinetics

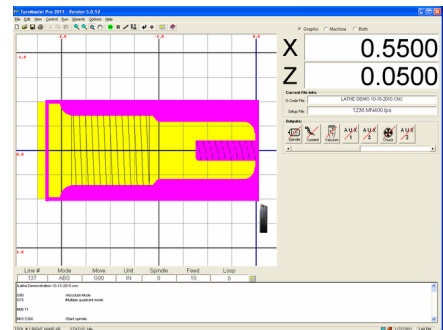
**Now with
High Torque
Motors**

Included Accessories

Cabinet stands with chip pan, 6" 3-jaw chuck, 7" 4-jaw chuck, 10" faceplate, steady rest, follow rest, 3MT dead center, 1-1/16" capacity 4-way toolpost, 52 piece clamping set, and toolbox

Features

- ✓ 12" x 36" Geared Head Gap Bed Bench Lathe
- ✓ Easy change 9 speeds (70 to 1400 RPM) w/Basic Pkg
- ✓ Powerful 2 HP motor, 1 PH, 220 Volt, D1-4 chuck mount
- ✓ Hardened and ground bed with reinforced cross ribs
- ✓ Headstock with tapered roller bearings
- ✓ 1-1/2" spindle bore diameter
- ✓ Splash lubrication in headstock



The CNC Lathe 1236 & 1340 are well engineered and professionally built, PC based CNC retrofit Lathes. Equipped with Windows based control software, these metal turning system are truly one of the finest examples of applying the latest PC technology to reduce cost and increase performance. Utilizing a proven, mid-size cast iron bed machine, the 1236 & 1340 offer stability and a good machining envelope. It runs on 220 to 240 VAC, has high speed machining performance, and accommodates program control of coolant, feedrate override, and many more functions through the PC based open architecture. Through careful selection and conditioning of base machines, and by applying the latest technology in motion control electronics and software, a new level of quality and performance has been achieved. Following the success of the CNC Express Milling Systems, MicroKinetics has capitalized on its 30+ years' experience in engineering cost effective CNC retrofits to develop these quality CNC Lathes. MicroKinetics has built and delivered a substantial number of CNC Lathes to machine shops, vocational schools, and laboratories with great results. This product has a great following of customers who have discovered the quality and value of the CNC Lathe 1236 & 1340. The quality shows throughout; all the way to crating and packing. With a generous warranty and superb technical support from MicroKinetics, the CNC Lathe 1236 & 1340 are helping many professionals achieve a new level of engineering, training, and technical capability.

MicroKinetics Corporation 3380 Town Point Drive NW #330
Tel: (770) 422-7845 Kennesaw, GA 30144 Fax: (770) 422-7854
www.microkinetics.com

MicroKinetics

C o r p o r a t i o n

High Performance Electronics

The latest technology constant current chopping drives used in the DriveRack power electronics result in very high feed and rapid rates, while the advanced USB motion controller insures maximum reliability with the use of opto-isolated inputs and outputs on ALL connections. Other systems may use direct connection or a printer port whose reliability is not acceptable for industrial applications.

Low Cost Accessories

You'll have access to many low cost accessories and tools. The most commonly needed ones are included with the package for convenience and added savings. Compatible tools and accessories are available from many machine tool vendors.

Unsurpassed Quality

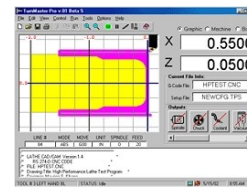
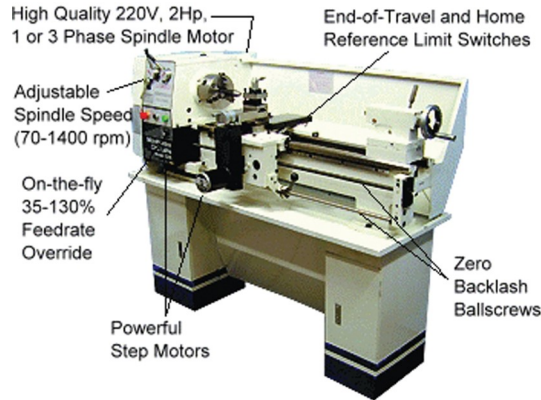
MicroKinetics CNC systems are expertly built and performance tested to conform to stringent standards. Detailed assembly and testing procedures and checklists are followed to ensure consistent, repeatable, high quality. All components are individually tested and systems are tested again as a unit before shipment.

Industry Leader

MicroKinetics offers the best reasonably priced CNC systems and quality technical support in the industry. Five year warranty on electronics and one year warranty on mechanics. MicroKinetics has been offering CNC systems to educational institutions, hobbyists, research facilities and small machine shops for 30+ years using the same business philosophy, expert engineering and quality technical support!

Specifications:

Table Work Surface Area	12" x 36"	13" x 40"
Swing Over Bed	12"	13"
Swing Over Gap	17"	18 3/4"
Length of Gap	9"	7 7/8"
Swing Over Cross-Slide	7 1/2"	8"
Swing Over Compound	3"	3"
Distance Between Centers	36"	40"
Carriage Travel	30"	35 1/4"
Cross-Slide Travel	5 1/2"	6 7/8"
Compound Travel	2 5/8"	2 5/8"
Tailstock Spindle Travel	3 5/8"	3 3/4"
Tailstock Taper	3 MT	3 MT
Spindle Nose Mounting	D1-4	D1-4
Spindle Bore Diameter	1 1/2"	1 1/2"
Spindle Taper	5 MT	5 MT
Spindle Taper w/Sleeve	3 MT	3 MT
	9 speeds	8 speeds
Spindle Speeds	(70 - 1400 RPM)	(70 - 2000 RPM)
Motor & Electrics	2 HP, 220V, 1 PH	2 HP, 220V, 1 PH
Machine Dimensions		
W/O Stand	22"H x 26"W x 60"L	30"H x 33"W x 73"L
Floor Space Req'd - Max.	30"W x 70"L	36"W x 73"L
Machine Net Weight	1100 lbs	1200 lbs



TurnMaster Pro
for Windows Software



Driverack



Advanced USB Controller
with Feed Rate Override



Parts Samples



Optional Splash Guard



Optional Flood Coolant
System

Product

Order

CNC Lathe 1236 Package	999-1236-000
CNC Lathe 1236 w/threading	999-1236-001
CNC Lathe 1340 Package	999-1236-000
CNC Lathe 1340 w/threading	999-1236-001
Flood Coolant System	999-6500-010
Lathe Splash Guard	999-1236-040

CNC Lathe 1236/1340

MicroKinetics Corporation

3380 Town Point Drive NW #330

Tel: (770) 422-7845 Kennesaw, GA 30144 Fax: (770) 422-7854